

# HINDLEY J & I SCHOOL

## PROSPECTUS







## WELCOME TO HINDLEY J & I SCHOOL

It gives us great pleasure to welcome you to Hindley Junior and Infant school. We are a Community Primary School, catering for the needs of children from the ages of 4 to 11. The school was inspected by Ofsted in Feb 2017 and was graded as 'Good'.

At Hindley J and I, we deliver a well-researched, balanced and creative curriculum. In addition to gaining language, mathematical, scientific and technological skills, your child will build confidence, develop self-reliance, learn to make decisions and develop the ability to articulate feelings and ideas. We attach great importance to the development of the children's spiritual and moral values. These, together with the development of their social skills, will enable them to build relationships with other children and adults and to be sensitive to the needs and feelings of others.

We believe that your partnership with the school is crucial. We will provide frequent opportunities for you to be kept informed and involved in all aspects of your child's life in school.

Childhood, we would all agree, is a very special time and no-one passes this way again. You may rely on us to do our utmost to make that time as joyous and productive as we can for your child. We look forward to a happy and trusting partnership between your home and our school.

If you are considering sending your child to the school, please don't hesitate to contact us for more information and/or arrange a visit.



## MISSION STATEMENT

We believe that our children should not only reach their best academically, but also develop a joy in life and learning.





# ADMISSIONS

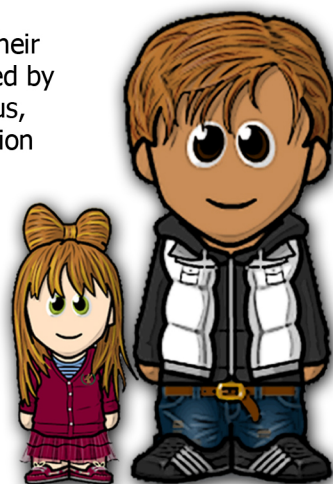
## Admissions Policy & Procedures

By law, parents must arrange for their child to start school at the beginning of the term of their 5th birthday, unless they have made other suitable arrangements, which have been approved by the Local Authority. In Wigan, there is one admission date for all children at age 4 years plus, with a closing date for accepting the place. Hindley J & I School has provision for 30 Reception age pupils.

## Admission Criteria

Admission criteria are used to allocate places when the number of applications for a school exceeds the number of places available. The admission criteria for schools in this section are:

- Children with Physical or Medical difficulties who the Local Authority have determined following an assessment of the child's needs, require a resourced place at the school
- Children with a Statement of Special Educational Needs which names the school.
- Children in Public Care.
- Children with siblings attending the school and who will still be there at time of admission.
- Proximity to the school. Distance is measured in a straight line using the LA measuring system.



Please contact School Placements for further information on 01942 486037.  
The Local Authority operates an 'all preferences equal' scheme for admission.

# INCLUSION

## Pastoral Care

All staff is committed to providing a secure and happy environment both for learning and for social development. If any matter arises which requires discussion, the class teachers are available by appointment after school. The Key Stage Managers and Senior Pastoral Managers are also available by appointment.

## Special Educational Needs

Hindley J & I School plans to provide an education that is inclusive of pupils of all abilities. The school has developed a programme of early intervention in order to identify pupils who have special educational needs.

# SCHOOL MEALS



School lunch is cooked on the premises and provides a varied healthy menu. Dinner money is paid via a cash machine in the school foyer. Parents can, if they wish, pay monthly or half treble. If your child is absent a 'credit' will be carried forward.



THE SCHOOL ENCOURAGES ALL THE CHILDREN TO DRINK WATER DURING THE COURSE OF THE SCHOOL DAY.

Arrangements are made for those children wishing to bring a packed lunch. These should not include hot or fizzy drinks, cans, chocolate bars, sweets or bottles. We ask that parents support the School's Health Education Policy when providing lunches and snacks. It is our policy not to allow children to bring sweets to school, but to encourage them to choose a healthier alternative, e.g. fruit, cheese etc.

## Free School Meals

Children from families in receipt of Income Support are eligible for free school meals. Application forms and further information are available from the Education Benefits Office.

# HEALTH & SAFETY

## Medicines and Emergencies

Medicines: Occasionally, it is necessary for children to receive prescribed medicine in school. It is preferable if parents can administer this, but if the medicine is prescribed for 4 daily doses please take the medicine to the office and complete a form authorising the staff to administer the medicine. Please note that only prescribed medicine will be administered by school.

Illness at school: Where illness is suspected, children are cared for and parents are contacted.

Accidents at school: In cases of minor accidents, First Aid will be given. We have several staff members with current First Aid certificates. If hospital treatment is necessary, parents will be contacted to enable them to collect their child and seek further medical assistance.

## Water in School

The school encourages all the children to drink water during the course of the school day. Research shows drinking water helps them concentrate better and improves learning. A water bottle is provided by school for this purpose.

## BEHAVIOUR & DISCIPLINE

Good behaviour is a high priority at Hindley J & I School. Without it, effective teaching cannot take place.

To promote self-discipline the staff use a system of positive reinforcement, i.e. rewarding good behaviour. However, it is still sometimes necessary to use sanctions. If a child's behaviour at school is giving cause for concern, parents will be informed. It is vital that the child realises that parents and teachers are working together. Similarly, parents may wish to discuss their child's behaviour with the school staff if there is a problem at home.

### Anti-Bullying Policy

It is every child's right to be educated in a secure school environment. It is the responsibility of everyone connected with our school to ensure that this happens. In consultation with parents and children, the school has agreed a definition of bullying. 'Bullying is repeated physical or verbal behaviour which is cruel and deliberate'.

## SCHOOL UNIFORM

We are proud of our uniform at Hindley J & I School. We feel that the uniform adds to the school identity and gives the children a sense of belonging.

- Blue Polo Shirt
- Maroon Jumper or Cardigan with school logo
- Grey Trousers
- Grey or Tartan Skirts
- Grey/White socks or Tights
- Black shoes
- PE Kit
- White T-Shirt
- Navy Blue Shorts
- Black Pumps



### Jewellery

We request that children do not wear jewellery in school other than a watch. In the interest of safety, earrings and studs should not be worn. For pierced earrings, children must be able to remove the earrings themselves for PE and swimming.

## EXTENDED SCHOOLS

School operates a Breakfast Club from 8.00 a.m. to 8.55 a.m. Here the children are given a healthy breakfast and then a range of activities take place. This provision is highly valued by the parents whose children attend.

Throughout the year we invite the children to join a variety of organised lunchtime or after school activities which are offered to pupils from Reception to Year 6.

Activities include athletics, basketball, gymnastics, football, choir, construction, card making, needle craft, multiskills and art and crafts.

These usually run for approximately 10 weekly sessions.



### Parent help in school

We ask for the assistance of parental help on both a regular and occasional basis. Regular help includes such activities as help with the developing love of books, baking, sewing etc. Help is often needed to accompany school trips, etc. We are very grateful for all the help we receive. Volunteer helpers must have an up-to-date police clearance (CRB) checks in place before helping in School.

## ATTENDANCE

At Hindley J & I we promote a positive attitude to punctuality and regular full attendance and ask that parents support us to ensure their child has full access to the curriculum and, therefore, the best opportunity to fulfil their potential. Registration takes place promptly at the beginning of each morning and afternoon sessions. We urge parents to ensure that their child attends school regularly to maximise their educational potential.

### Appointments

All absences due to dental and medical appointments should be made outside school hours, where possible.

### Family holidays

The school attaches great importance to the maximum possible attendance, which is in the best interests of your child. Keep family holidays out of term time, in order to cause as little disruption as possible to your child's education. Holiday absence during term time cannot be authorised.

WE URGE PARENTS TO ENSURE THAT THEIR CHILD ATTENDS  
SCHOOL REGULARLY TO MAXIMISE THEIR EDUCATIONAL POTENTIAL.





## EDUCATIONAL VISITS

We believe that educational visits provide essential opportunities to bring the curriculum to life.

Educational visits are arranged for all the children as part of their work, but teachers are always mindful of cost.

## CHARGING AND REMISSIONS POLICY

The Education Reform Act of 1988 maintains 'the right to education' during school hours; however voluntary contributions can be invited to support and pay for such activities. As the Governors, Headteacher and staff believe these activities are extremely beneficial to the children, parents are asked to make a voluntary contribution, of a recommended amount for certain activities.

No child will be excluded from an activity that depends on voluntary contributions, although if insufficient monies are received then the activity, through lack of funding, may not take place. Parents who have difficulty in making voluntary contributions should contact the Headteacher.

The Governing Body reserves the right to charge for wilful damage or breakage on the school premises.

## HOMEWORK

Homework is seen as an important extension of our work in school and we have a homework programme for year group. Children are encouraged to read with their parents and practise their multiplication tables from Reception Class onwards and advance to more regular homework as they progress through school.

## REPORTS

We hold two Parents' Evenings a year and we do like to see as many parents as possible. If the dates of those meetings prove inconvenient we are always happy to arrange an alternative time for individual parents. This can be arranged directly with the school office. Active and Positive involvement by parents will lead to enhanced progress for your child.

At the end of the summer term, you will receive a written report about your child's progress.

## ASSESSMENT

Assessment is an ongoing process within school, the aim of which is to help your child achieve his or her maximum potential. This takes many forms including observation, written evidence and discussion between teacher and child.

Formal assessment within the National Curriculum will take place at ages 7 and 11. Children will be involved in ongoing assessment throughout their time with us.

## FACILITIES

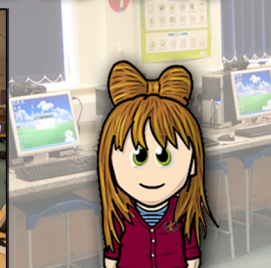
### CLASS ROOM



### HYDROTHERAPY POOL



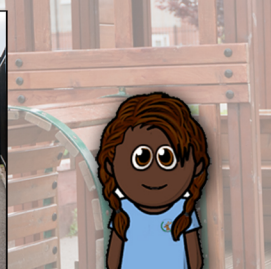
### COMPUTER SUITE/LIBRARY



### EYFS/KS1



### PLAY GROUND







# **HINDLEY J & I SCHOOL**

Argyle Street

Hindley

Wigan

WN2 3PN

tel. 01942 255339 fax. 01942525157

[enquiries@admin.hindley.wigan.sch.uk](mailto:enquiries@admin.hindley.wigan.sch.uk)

[www.hindley.wigan.sch.uk](http://www.hindley.wigan.sch.uk)



CHARACTERS CREATED AT [WWW.WEEWORLD.COM](http://WWW.WEEWORLD.COM)